

2008-09 BOBCAT PELT TAGGING REPORT

PERFORMANCE REPORT
STATEWIDE WILDLIFE RESEARCH AND SURVEYS

A Contribution of Pittman-Robertson Funds
Federal Aid in Wildlife Restoration

Grant W-39-R-15

Kansas Department of Wildlife and Parks

Mike Hayden
Secretary

Prepared by

Matt Peek
Furbearer Biologist

Joe Kramer, Director
Fisheries and Wildlife
Division

Mike Mitchener, Wildlife
Section Chief



September 2009

PERMISSION TO QUOTE

This is an annual progress report that may contain information that is subject to future modification or revision. Persons wishing to quote from this report, for reproduction or reference, should first obtain permission from the Chief of the Wildlife Section, Kansas Department of Wildlife and Parks, 512 SE 25th Avenue, Pratt, KS 67124.

EQUAL OPPORTUNITY STATEMENT

This program receives Federal financial assistance from the U.S. Fish and Wildlife Service. Under Title VI of the Civil Rights Act of 1964, Section 504 of the Rehabilitation Act of 1973, Title II of the Americans with Disabilities Act of 1990, the Age Discrimination Act of 1975, and Title IX of the Education Amendments of 1972, the U.S. Department of the Interior and its bureaus prohibit discrimination on the basis of race, color, national origin, age, disability or sex (in educational programs). If you believe that you have been discriminated against in any program, activity or facility, or if you desire further information, please write to:

**The U.S. Fish and Wildlife Service
Office of Diversity and Civil Rights Programs- External Programs
4040 North Fairfax Drive, Suite 130
Arlington, VA 22203**



2008-09 BOBCAT PELT TAGGING REPORT

Prepared by Matt Peek, Furbearer Biologist



An enumeration of bobcats taken in Kansas has been conducted annually since 1978. This project is accomplished with tags provided by the U.S. Fish and Wildlife Service, Office of Management Authority, under the CITES Export Tag Program. In 2008, Kansas was issued 8001 yellow “KS BCAT” tags (#31000-39000). Also on hand were tags lower in the number sequence that had been leftover from previous seasons. A total of 141 KDWP employees and offices were issued tags for the 2008-09 furharvesting season.

CITES tags were affixed to the pelts of 4080 bobcats that were taken in Kansas during the furharvesting season. This included 4 bobcats salvaged or confiscated by KDWP. This was the fewest bobcats harvested since 2002-03, and a 28% decrease from last year’s harvest of 5668 bobcats. The number of bobcats pelt tagged annually since 1978 can be found in **Figure 1**, and harvest per KDWP administrative region can be found in **Figure 2**. Harvest declined in all five administrative regions for the second consecutive year, and for the first time, region 1 (Northwest Kansas) was responsible for the highest total harvest.

Bobcats were taken in 101 of 105 counties. The number of bobcats taken in each county is presented in **Figure 3**. The estimated number of bobcats taken each day of the season is presented in **Figure 4**.

Bobcats may be taken using equipment authorized in K.A.R. 115-5-1 or salvaged during the harvest season. A total of 1286 furharvesters took bobcats during the season. **Table 1** provides a break down of the methods furharvesters used to take bobcats. **Table 2** indicates the primary species being pursued at the time the bobcat was taken. The number of furharvesters having various total season bags is given in **Table 3**.

After the initial tag allocation, tag accountability was maintained via reports from KDWP employees or offices issued tags. After the season, each was responsible for inventorying unused tags and accounting for all tags they were issued. Unused tags were then destroyed by each tagger or returned to the Emporia office. Bobcats taken outside the furharvesting season (n = 5) were not included in this analysis.

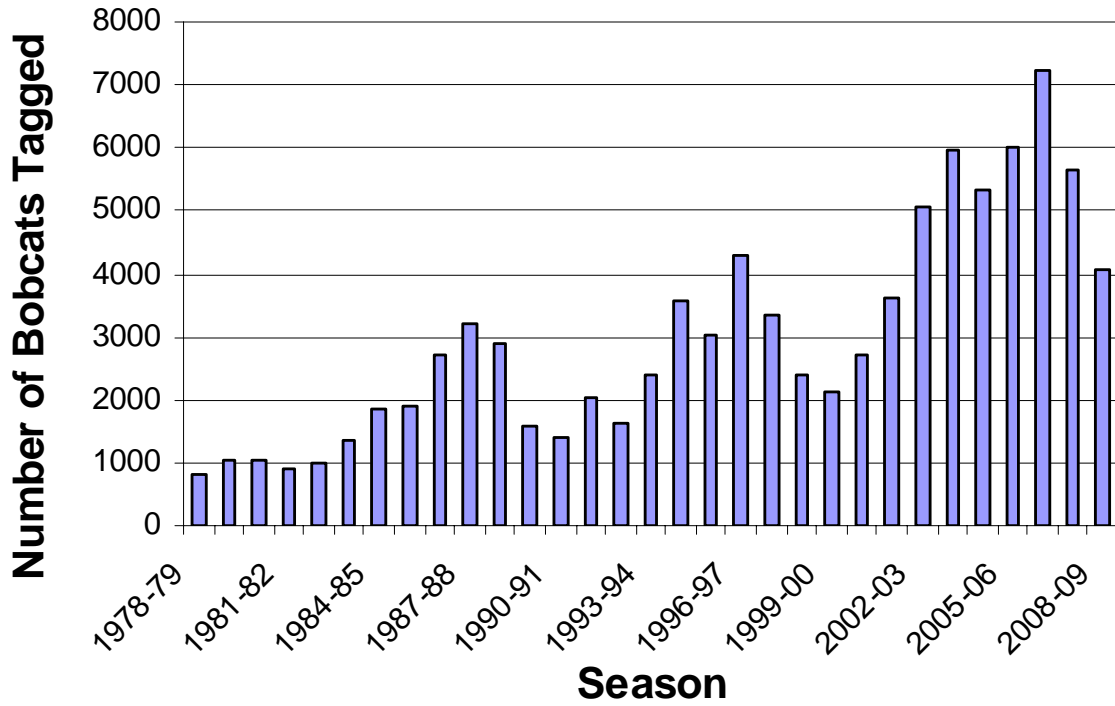


Figure 1. Number of bobcats pelt tagged annually since tagging began in 1978.

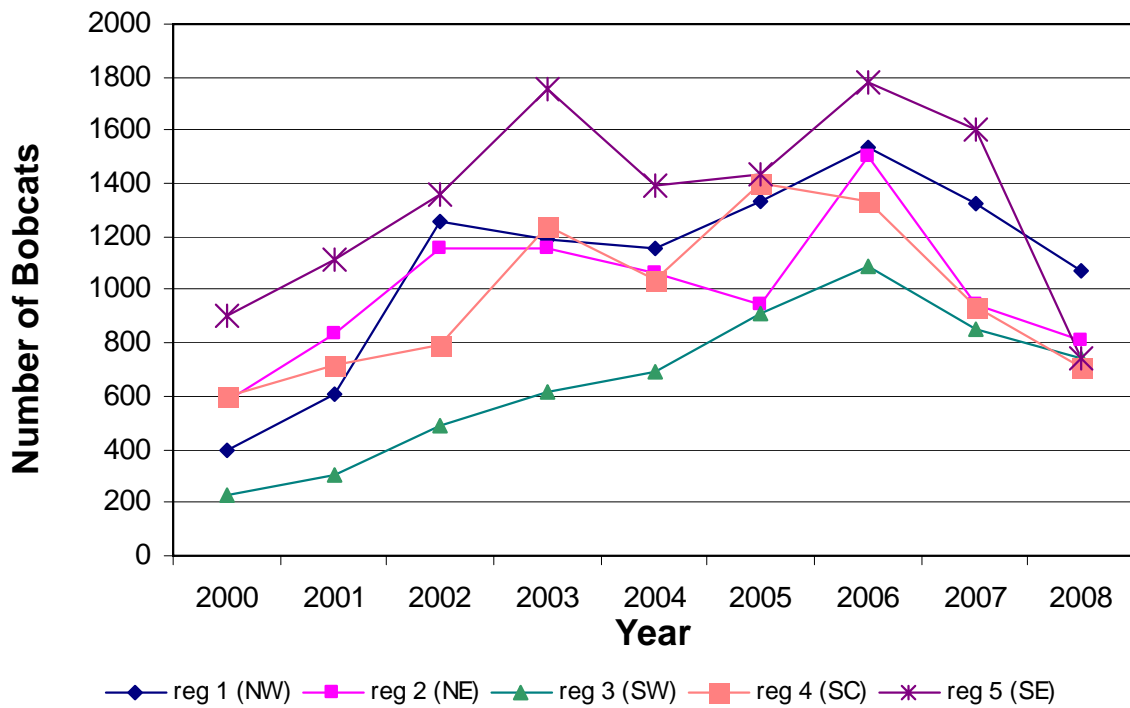


Figure 2. Number of bobcats harvested annually since 2000 in each of KDWP's 5 administrative regions.

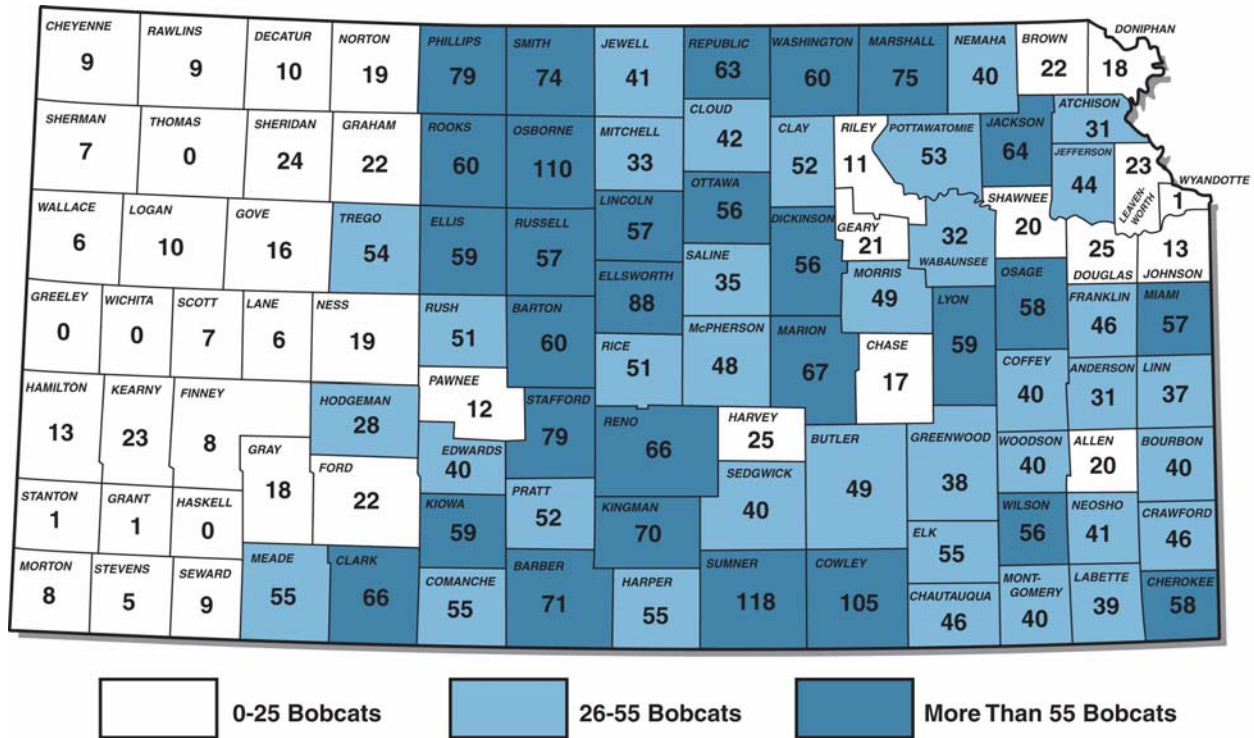


Figure 3. Number of bobcats taken per county during the 2008-09 furharvesting season in Kansas (n = 4073).

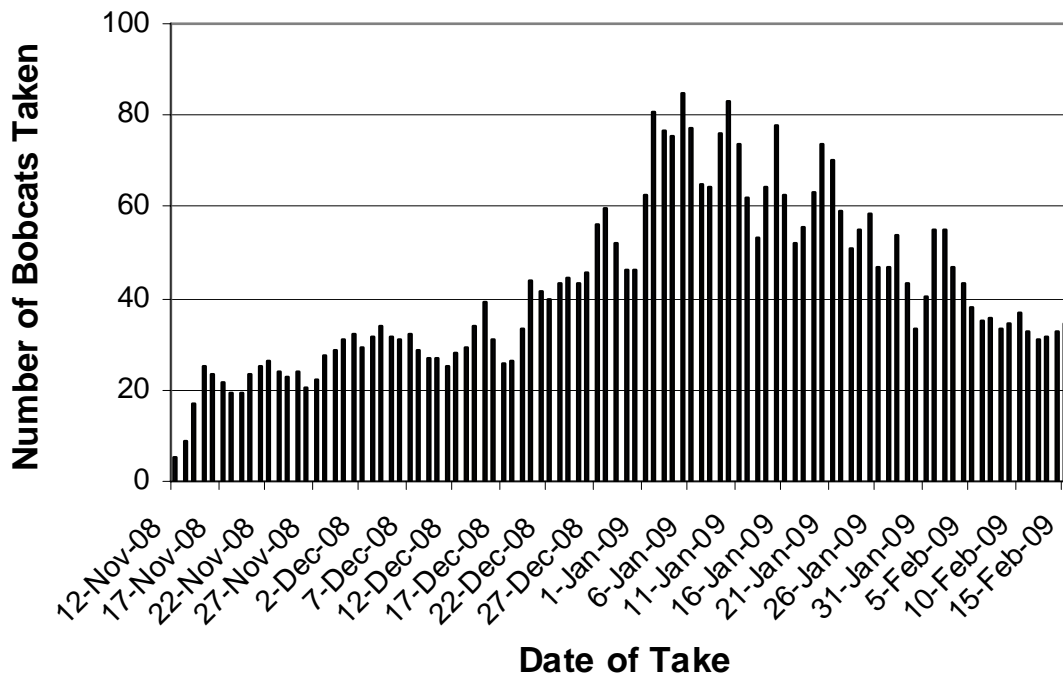


Figure 4. Estimated number of bobcats taken per day during the 2008-09 furharvesting season. (Data smoothed: $y_{(i)} = .5y_{(i)} + .25y_{(i+1)} + .25y_{(i-1)}$.)

Table 1. Methods used to take bobcats during the 2008-09 furharvesting season in Kansas.

METHOD	Number of Furharvesters*	Number of Bobcats taken	Percent of Bobcats taken
TRAPPING			
(1) Foothold Trap	509	1666	40.8%
(2) Body Gripping Trap	138	308	7.5%
(3) Cage Trap	231	654	16.0%
(4) Snare	207	607	14.9%
SUB-TOTAL	1085	3235	79.3%
HUNTING			
(5) Rifle	379	542	13.3%
(6) Shotgun	66	82	2.0%
(7) Archery	63	66	1.6%
(8) Hounds	13	19	0.5%
SUB-TOTAL	521	709	17.4%
OTHER			
(9) Salvage	115	126	3.1%
(10) Unspecified	4	10	0.2%
SUB-TOTAL	119	136	3.3%
TOTAL	1725	4080	100.0%

* Furharvesters who took bobcats by more than one method are represented multiple times.

Table 2. Primary species being pursued when bobcats were taken during the 2008-09 furharvesting season in Kansas.

SPECIES	FREQUENCY	PERCENT
FURBEARERS		
Bobcat	3440	84.3%
Coyote	242	5.9%
Raccoon	134	3.3%
Other	3	0.1%
SUB-TOTAL	3819	93.6%
BIG GAME		
Deer	90	2.2%
SMALL GAME		
Quail	3	0.1%
Pheasant	25	0.6%
rabbit	3	0.1%
dcks	2	0.0%
Other	3	0.1%
SUB-TOTAL	36	0.9%
OTHERS		
Unspecified	9	0.2%
Salvage	126	3.1%
SUB-TOTAL	135	3.3%
TOTAL	4080	100.0%

Table 3. Total season bag of bobcats per furharvester during the 2008-09 season.
Data includes 15 bobcats taken by KDWP.

Total Season Bag	Number of Furharvesters	Percent of Furharvesters	Cumulative Percent of Furharvesters	Total number of Bobcats Taken	Percent of Bobcats Taken	Cumulative Percent of Bobcats Taken
1	581	45.18%	45.18%	581	14.24%	14.24%
2	234	18.20%	63.37%	468	11.47%	25.71%
3	126	9.80%	73.17%	378	9.26%	34.98%
4	90	7.00%	80.17%	360	8.82%	43.80%
5	62	4.82%	84.99%	310	7.60%	51.40%
6	40	3.11%	88.10%	240	5.88%	57.28%
7	28	2.18%	90.28%	196	4.80%	62.08%
8	25	1.94%	92.22%	200	4.90%	66.99%
9	23	1.79%	94.01%	207	5.07%	72.06%
10	15	1.17%	95.18%	150	3.68%	75.74%
11	13	1.01%	96.19%	143	3.50%	79.24%
12	4	0.31%	96.50%	48	1.18%	80.42%
13	12	0.93%	97.43%	156	3.82%	84.24%
14	7	0.54%	97.98%	98	2.40%	86.64%
15	4	0.31%	98.29%	60	1.47%	88.11%
16	4	0.31%	98.60%	64	1.57%	89.68%
17	2	0.16%	98.76%	34	0.83%	90.51%
18	4	0.31%	99.07%	72	1.76%	92.28%
19	3	0.23%	99.30%	57	1.40%	93.68%
22	1	0.08%	99.38%	22	0.54%	94.22%
23	3	0.23%	99.61%	69	1.69%	95.91%
27	1	0.08%	99.69%	27	0.66%	96.57%
33	2	0.16%	99.84%	66	1.62%	98.19%
34	1	0.08%	99.92%	34	0.83%	99.02%
40	1	0.08%	100.00%	40	0.98%	100.00%

Total

1286

4080