

PERRY NEWS

"takemefishing"

January 2011

Issue 4

Special points of interest:

- High Water Wonders
- New gill nets yield big numbers
- Zebra mussel numbers lower than expected
- Brown SFL—Cat Lovers Paradise

Inside this issue:

- Great Whites at Perry 2
- Zebra Mussels on the Move 3
- 2010 Fall Netting Information 3
- Featured Lake: Brown State Fishing Lake 3

Timing is Everything even with High Water!

I'm sure you've heard the saying that timing is everything, well it's true. It is truly amazing what two, three or even four weeks of high water can do for a fishery if the timing is right. Not only is the date that the inflow into the Reservoir starts but how long the high water stays in the Reservoir. The Conservation Pool at Perry is 891.5 fms however this past year, if you remember, there was a period in March and April where the water went to about 6' over. Then the Army Corps of Engineers dropped the level down below pool for a short period and then the rains hit. The Reservoir was above Conservation Pool from April 20th with a peak of 907.5 (16'

over) on July 10th until December 18th. This high water may have frustrated some fishermen (picture below) with most boat ramps being closed however the fishes loved all the flooded habitat. It is very evident from our August seining and electrofishing that most species benefited, largemouth bass and gizzard pictured below. Seining 10 different locations throughout the Reservoir we sampled the highest number of largemouth bass every seined, nearly the highest for white bass with above average numbers of white crappie,

channel catfish, gizzard shad and bluegills. Shoreline electrofishing at another 10 locations showed the highest catch rates ever for gizzard shad, largemouth bass and white bass. All these fish are young of the year fish so we have some great fishing to look forward to. With all the smaller gizzard we'll have some plump fishing going into and through winter.



White Bass Fishing at Perry!

The third week of October means that I'm be on Perry running nets both trap and gill nets. There were some equipment changes for gill nets this year with the change to a core panel gill net that is 6'x80' with mesh size starting at 3/4" and ending at 2 1/2" with 10' panels increasing by 1/4". We also changed to random netting locations throughout the Reservoir. I also ran the old style gill nets for comparison. No matter which numbers you use it looks really good for white bass at Perry. The new core panel gill nets sampled 511 white bass, the most ever sam-

pled, largest was 17.3" and weighed nearly 2.6 lbs. We caught a lot of those bigger white bass that our old style nets miss. However our old style nets sampled even more than the most ever! We sampled 726 white bass at random locations all over the Reservoir. Either of these numbers eclipse the old record number of fish. I believe due to such high numbers we had a disease problem and

a fish kill this fall. There were some dead and distressed fish next to the bank for a couple weeks. Notice the red blotches on the fish below. The migrating birds rather enjoyed the platter being set for them. There are still good numbers of white bass, they are a blast to catch!

"No matter which numbers you use it looks really good for white bass at Perry..."



I know some of you cat fishermen have been doing battle with the blue catfish that we started stocking in 2006. The 35" minimum length limit is designed to keep these late bloomers in the Reservoir, not sexually mature until 6 or 7 years old. We sampled several in both types of gill nets with the largest being nearly 21" and almost 7.5 lbs. I feel we can someday have a blue catfish fishery that rivals the one at Milford Reservoir. You know the record blue catfish weighed 94 lbs, something to look forward to!



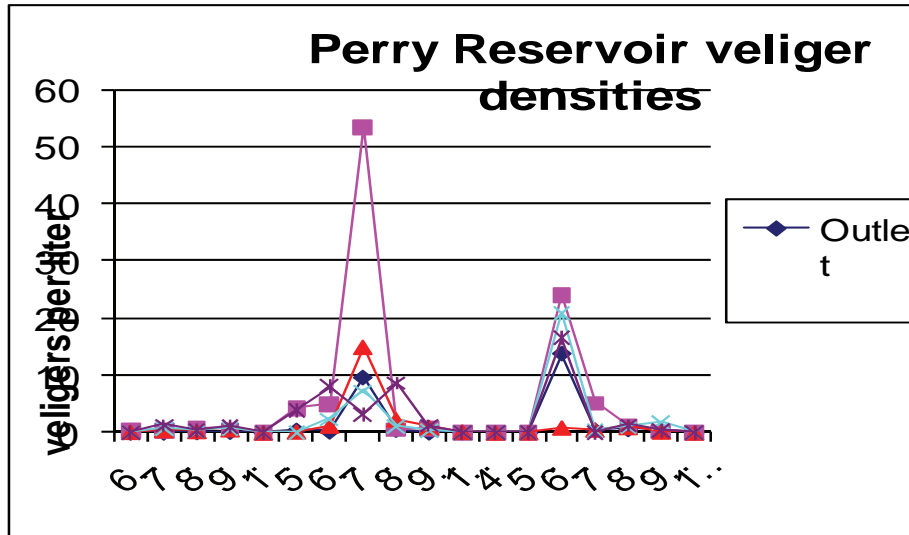
Zebra Mussels On the Move

Look at the graph below, what do you see? Well I see less zebra mussel veligers than I would have expected. Jason Goeckler, expert on nuisance species, speculated it could have been how long water was released from Perry during most of their spawning season. I guess that is good for Perry but those free floating little veligers are going to cause lots of problems down-

stream. Lawrence's water plant already has problems with them on

screens and settling basins. Milford Reservoir is now infested with zebra mussels and it won't be long before Topoka

has similar problems. These little invasive mussels are going to cost everyone money. You must remember to **CLEAN, DRAIN and DRY** all equipment after leaving Perry.

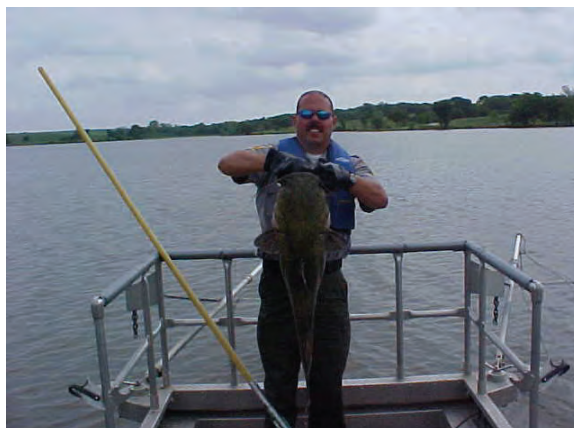


2010 Netting Information

Species	Lake	CPUE Density	CPUE Preferred	CPUE Lunker	Biggest Fish
Black Crappie	Brown SFL	19.5	1.5	0	0.73
Black Crappie	Sabetha Pony Creek	9	2	0.25	0.93
Bluegill	Sabetha Pony Creek	17.5	2.25	0	0.53
Bluegill	Brown SFL	15	1.5	0	0.61
Channel Catfish	Sabetha City Lake	13.83	0.67	0.17	10.91
Channel Catfish	Sabetha Pony Creek	10.17	2	0.33	12.13
Redear Sunfish	Atchison SFL	15.5	3	0	0.8
Sauger	Perry Reservoir	0.5	0.5	0.3	2.33
Walleye	Holton Banner Creek	5.75	3.38	0.75	7.47
White Bass	Perry Reservoir	10.1	4.7	0.75	2.58
White Crappie	Perry Reservoir	30.75	6.92	0.46	1.19

Featured Lake: Brown State Fishing Lake

Brown State Fishing Lake is located 8 miles east of Hiawatha just off of Hwy 36. This 62 acre impoundment was renovated about 12 years ago and is still producing some unbelievable fishing. You say you're a cat lover, well you'll love this lake!





Kansas Department of Wildlife & Parks

Perry State Park
Kirk Tjelmeland
5441 West Lake Rd.
Ozawkie, KS 66070
Phone: 785-246-4514
Fax: 785-246-0224
E-mail: kirk.tjelmeland@ksoutdoors.com

The lake is full of tremendous fishing opportunities: numerous rock jetties, brush piles, sunken islands and the creek channel. There is also a concrete boat ramp, a courtesy dock and 3 fish feeders. Shaded primitive campsites and easy access right off of Hwy 36 make this lake an ideal place to spend some time with the family. The lake has a pretty diverse fishery: black crappie, bluegill, channel catfish, largemouth bass, redear sunfish, walleye and flathead catfish. With fall netting just completed the largest channel catfish sampled was 14.5 lbs., largest bluegill sampled in traps was .61 lbs. and the largest black crappie was about .75 lbs. but there were a bunch of them. The local fishermen are very tight lipped about Brown State Fishing Lake and from the pictures you can see why.



Annually we stock nearly 3,300 channel catfish with most of these fish being 6-10" fish (about 1/2 a pound) however they grow fast in this lake. With 3 fish feeders feeding 4650 lbs of sinking fish food from April to September channel catfish are easy to locate. Kirk Thompson, Area Manager, is pictured to the right holding up a nice walleye, fry stockings appear to be making some nice fish. The largemouth bass and net full of bluegill were collected during spring electrofishing. The crappie pictured to the right sure would look good all fried up, golden brown, with a side of French fries! This lake is ideal for a float tube just keep an eye on the weather it can get a little windy.



The next Perry News will be available late in 2011. Please pass this newsletter on to your friends or send them to the KDWP website so that they can have it sent to them electronically, visit kdwp.state.ks.us