

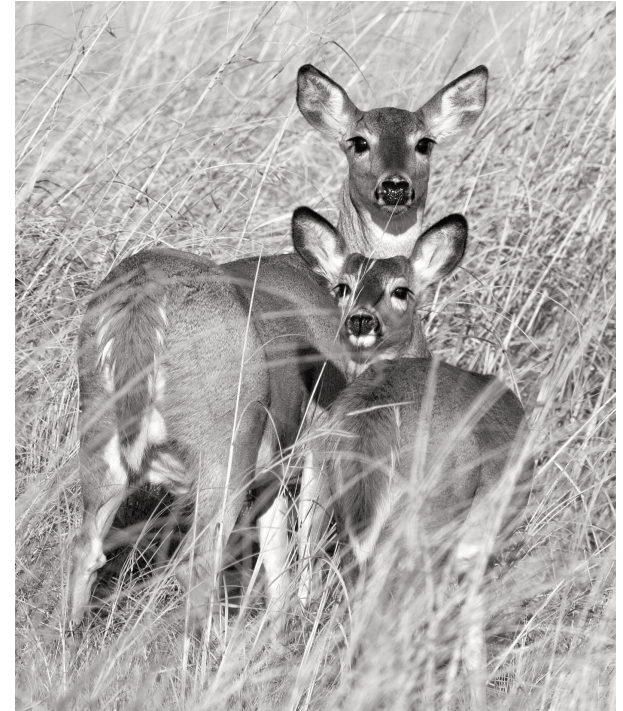
**W**elcome to the Cheney State Park West Side Trail. At an approximate length of 5 miles, this is the longest trail available at the park. The trail begins at the west side of the parking lot of the office and winds its way up the west side of the park to the park boundary at South Yoder Road.

**T**he trail has been a “work in progress” and has been done by our staff in their spare time over the past 5 years. We are striving to improve it as we can.

**H**ikers and bikers are welcome on the trail but motorized vehicles and horses are not allowed. As with all park property, dogs must be kept on a leash at all times.

We hope you enjoy the trail.

# CHENEY State Park West Side Trail



Cheney State Park  
16000 NE 50th St.  
Cheney, KS 67025

(Area Office)  
(316) 542-3664

(Wildlife Area)  
(316) 542-3664

(Regional Office)  
(316) 683-8069



CheneySP@ksoutdoors.com  
www.ksoutdoors.com

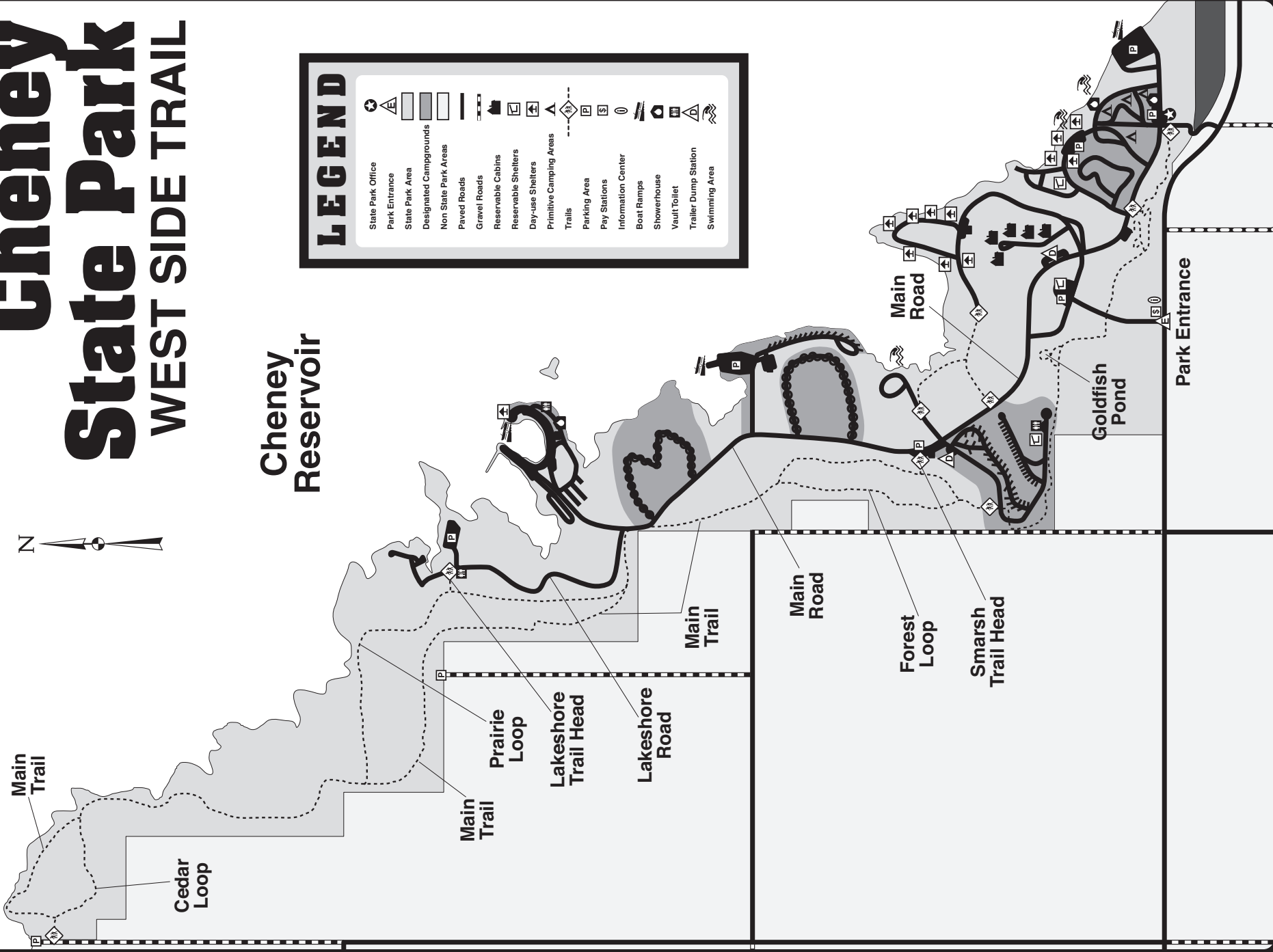
Equal opportunity to participate in and benefit from programs described herein is available to all individuals without regard to race, color, national origin, sex, age, disability, sexual orientation, gender identity, political affiliation, and military or veteran status. Complaints of discrimination should be sent to Office of the Secretary, Kansas Department of Wildlife, Parks and Tourism, 1020 S Kansas Ave., Topeka, KS 66612-1327. 04/14

# Cheney State Park

## WEST SIDE TRAIL



Cheney Reservoir



### LEGEND

	State Park Office
	Park Entrance
	State Park Area
	Designated Campgrounds
	Non State Park Areas
	Paved Roads
	Gravel Roads
	Reservable Cabins
	Reservable Shelters
	Day-use Shelters
	Primitive Camping Areas
	Trails
	Parking Area
	Pay Stations
	Information Center
	Boat Ramps
	Showerhouse
	Vault Toilet
	Trailer Dump Station
	Swimming Area