

Pittsburg District Fisheries Newsletter

Kansas Department of Wildlife, Parks and Tourism

Spring 2020

Connor Ossowski
District Fisheries Biologist
Kansas Department of Wildlife, Parks and Tourism
507 E. 560th Ave
Pittsburg, KS 66762
(620) 231-3173
connor.ossowski@ks.gov

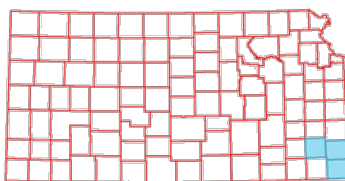
2019 Fish Stocking Report & Sampling Results

The Pittsburg District includes Cherokee, Crawford, and Neosho counties. Seven water bodies were sampled in the Pittsburg district in October of 2019 to monitor the fish populations: Bone Creek, Chanute City Lake - Sante Fe Lake, Crawford State Fishing Lake, Neosho State Fishing Lake, Thayer City Lake (new), and Thayer City Lake (old). You will find the fish stocking report of 2019, fish habitat additions in 2020, and highlights from the 2019 fall sampling effort.



I encourage you to take your kids, or someone who hasn't fished before, fishing this year... Who knows, they might just become a fisheries biologist when they grow up!

Thanks, Dad!

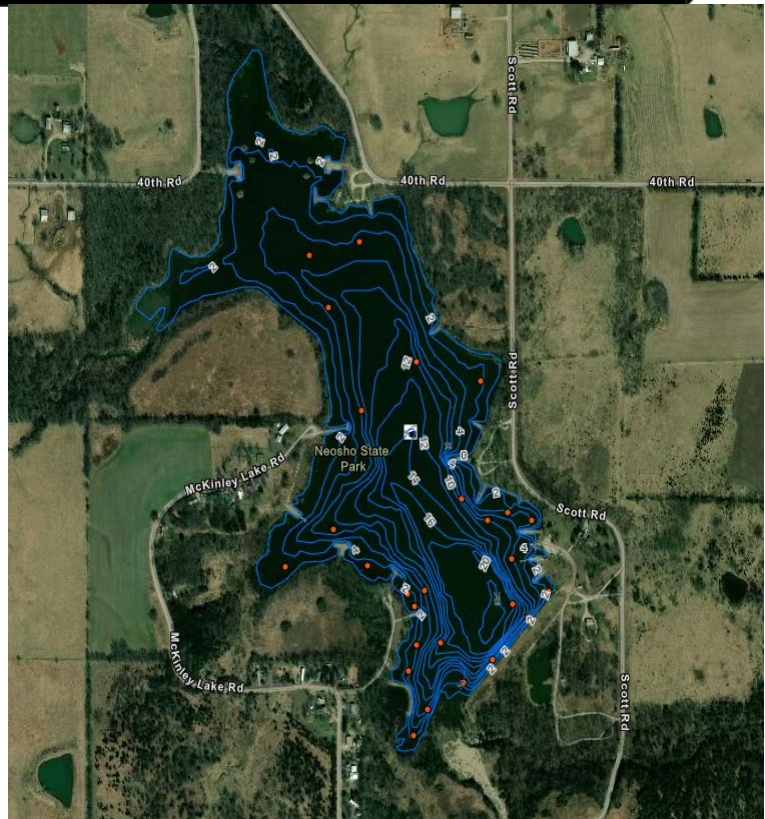
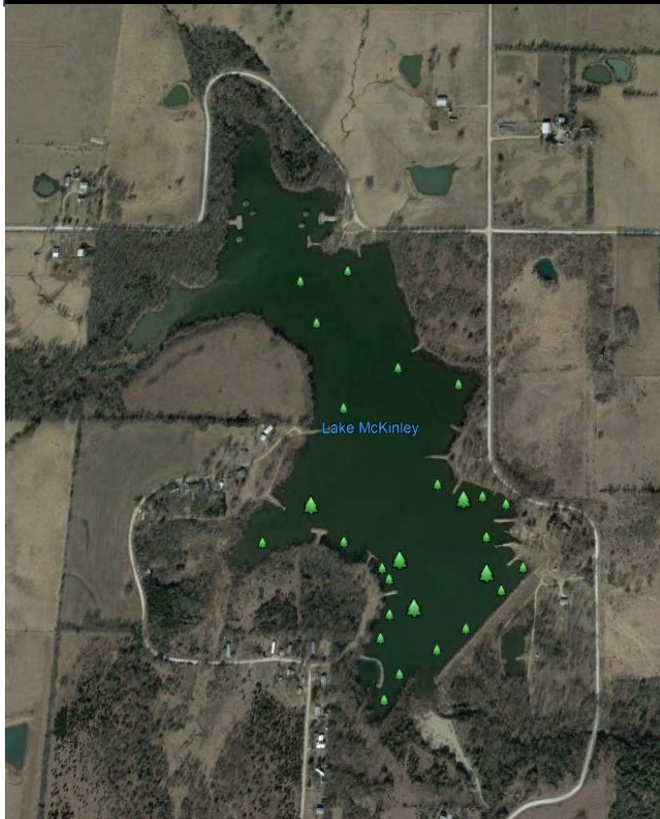


2019 Fish Stocking Report

Impoundment	Code	Species	Size	Month	Stocking Year	Delivered
(FISH) CHEROKEE CO - OPLOTRIK	ZPCK	Channel Catfish	INTERMEDIATES	OCT	2019	100
(FISH) CHEROKEE CO OPLOTRIK 2	ZPC1	Channel Catfish	INTERMEDIATES	OCT	2019	201
(FISH) CRAWFORD CO - MICHAELS #4	ZPC4	Channel Catfish	INTERMEDIATES	OCT	2019	152
(FISH) CRAWFORD CO-MICHAELS #1	ZPCR	Channel Catfish	INTERMEDIATES	OCT	2019	350
Arma City Lake	ARCL	Channel Catfish	INTERMEDIATES	OCT	2019	500
Arma City Lake	ARCL	GRASS CARP TRIPLOID	INTERMEDIATES	AUG	2019	10
Bone Creek Lake	BNCL	Channel Catfish	FINGERLINGS	APR	2019	11013
Bone Creek Lake	BNCL	Channel Catfish	INTERMEDIATES	OCT	2019	10914
Bone Creek Lake	BNCL	Largemouth Bass	FRY	APR	2019	218377
Bone Creek Lake	BNCL	Saugeye	FRY	APR	2019	1000000
Chanute City Lake	CNCL	Channel Catfish	INTERMEDIATES	OCT	2019	5003
Chanute City Lake	CNCL	Saugeye	FRY	APR	2019	160000
CHANUTE-HIGHLAND PARK POND	CNPP	Channel Catfish	INTERMEDIATES	OCT	2019	201
COLUMBUS VFW	CKCL	Channel Catfish	INTERMEDIATES	OCT	2019	200
CRAWFORD STATE FISHING LAKE	CRSL	Channel Catfish	FINGERLINGS	APR	2019	3014
CRAWFORD STATE FISHING LAKE	CRSL	Channel Catfish	INTERMEDIATES	OCT	2019	1520
CRAWFORD STATE FISHING LAKE	CRSL	REDEAR SUNFISH	FINGERLINGS	APR	2019	28805
CRAWFORD STATE FISHING LAKE	CRSL	Saugeye	FRY	APR	2019	600000
CRAWFORD STATE FISHING LAKE	CRSL	Wiper - W x S Bass	INTERMEDIATES	OCT	2019	1325
FRONTANAC-LAKE #2	FRNB	Channel Catfish	INTERMEDIATES	OCT	2019	150
FRONTANAC-LAKE #3	FRNC	Channel Catfish	INTERMEDIATES	OCT	2019	50
FRONTENAC-LAKE #1	FRNA	Channel Catfish	INTERMEDIATES	OCT	2019	303
FRONTENAC-LAKE #1	FRNA	GRASS CARP TRIPLOID	INTERMEDIATES	APR	2019	15
GREENBUSH EDUCATION CENTER	GBEC	Channel Catfish	INTERMEDIATES	OCT	2019	250
GREENBUSH EDUCATION CENTER #2	GBE2	Channel Catfish	INTERMEDIATES	OCT	2019	151
MINED LAND WA-CK/CR CO	MLWA	Channel Catfish	FINGERLINGS	APR	2019	4788
MINED LAND WA-CK/CR CO	MLWA	Channel Catfish	INTERMEDIATES	OCT	2019	14066
MINED LAND WA-CK/CR CO	MLWA	GRASS CARP TRIPLOID	INTERMEDIATES	AUG	2019	686
MINED LAND WA-CK/CR CO	MLWA	GRASS CARP TRIPLOID	INTERMEDIATES	APR	2019	105
MINED LAND WA-CK/CR CO	MLWA	REDEAR SUNFISH	FINGERLINGS	APR	2019	25118
MINED LAND WA-CK/CR CO	MLWA	Wiper - W x S Bass	INTERMEDIATES	OCT	2019	506
MULBERRY CITY LAKE	MUCL	Channel Catfish	INTERMEDIATES	OCT	2019	200
Neosho State Fishing Lake	NOSL	Channel Catfish	INTERMEDIATES	OCT	2019	4600
NEOSHO WILDLIFE AREA POND	NOWP	Channel Catfish	INTERMEDIATES	OCT	2019	301
PITTSBURG-LAKESIDE PARK LAKE	PTCA	Channel Catfish	INTERMEDIATES	OCT	2019	600
PITTSBURG-UNIVERSITY POND	PTCB	Channel Catfish	INTERMEDIATES	OCT	2019	403
PITTSBURG-WILDERNESS PARK	PTCE	Channel Catfish	INTERMEDIATES	OCT	2019	150
THAYER CITY LAKE	THCL	Channel Catfish	FINGERLINGS	APR	2019	610
THAYER CITY LAKE	THCL	Channel Catfish	INTERMEDIATES	OCT	2019	1003
THAYER CITY LAKE	THCL	REDEAR SUNFISH	FINGERLINGS	APR	2019	6060
THAYER CITY LAKE (NEW)	THCA	Channel Catfish	FINGERLINGS	APR	2019	906
THAYER CITY LAKE (NEW)	THCA	Channel Catfish	INTERMEDIATES	OCT	2019	1003
THAYER CITY LAKE (NEW)	THCA	REDEAR SUNFISH	FINGERLINGS	APR	2019	9258

As you can tell from above, a lot of effort is placed into stocking fish that are raised from our state fish hatcheries in the Pittsburg district. A total of 2,112,967 fish were stocked in 2019 in nearby waters from Pittsburg with the following totals for species: 62,702 channel catfish, 816 triploid grass carp for a biological control on vegetation management, 218,377 largemouth bass, 69,241 redear sunfish, 1,760,000 saugeye, and 1,831 striped bass hybrids.

Habitat Enhancement – Neosho State Fishing Lake “Lake McKinley”



Habitat.. habitat.. habitat! Similar to us needing a house and a roof over our head, fish need structure to be able to utilize for spawning, nursery, and refuge habitat. By utilizing cedar trees, this adds a natural form of structure to the lake.

KDWPT public land and fisheries staff enhanced the fish habitat with over 250 cedar trees over the course of a two week time period at Neosho State Fishing Lake near Parsons. In tandem with adding fish habitat, the fishing piers and jetties were also reinforced with rock to decrease erosion and better shoreline access. Brush was also cleared around the lake to open up for enhancing terrestrial habitat for wildlife, as well as adding wind action to the lake to increase overall oxygen levels in the water year round.

The map above on the left shows “tree icons” where the habitat was placed and the larger the “tree icon” the larger the brushpile. The map above on the right shows orange dots where the habitat was placed with water contours. GPS coordinates are available on the KDWPT website and interactive map at the following link: <https://ksoutdoors.com/KDWPT-Info/Locations/Hunting-Fishing-Atlas/Fishing-Atlas>

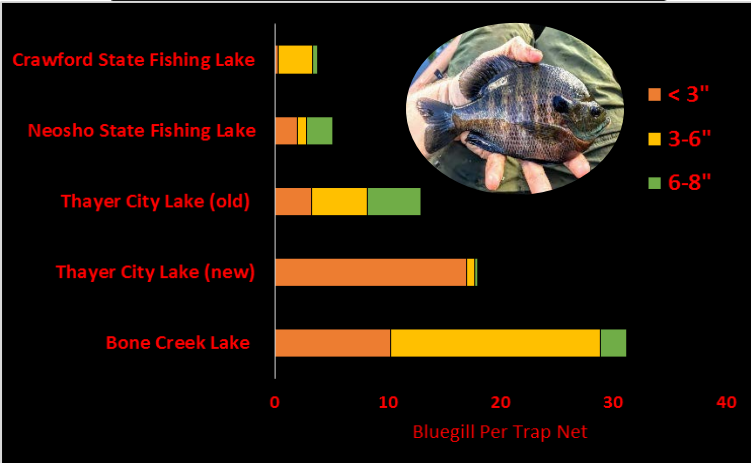
Habitat Enhancement – Neosho State Fishing Lake “Lake McKinley”



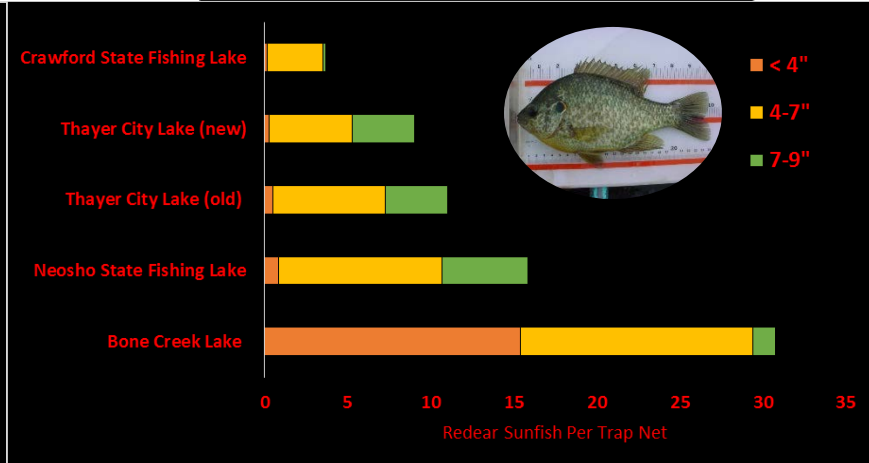
Above are a few pictures of the habitat enhancement effort at Neosho State Fishing Lake. Special thanks to Seth Lundgren, Independence District Fisheries Biologist, for coming over to help for a day and all of the effort from our Neosho Wildlife Area public land staff; this project could not have been completed without all of the hard work and cooperation with one another. Anglers will benefit for years to come, due to this effort. Thanks everyone!

2019 Fall Sampling Highlights

Bluegill



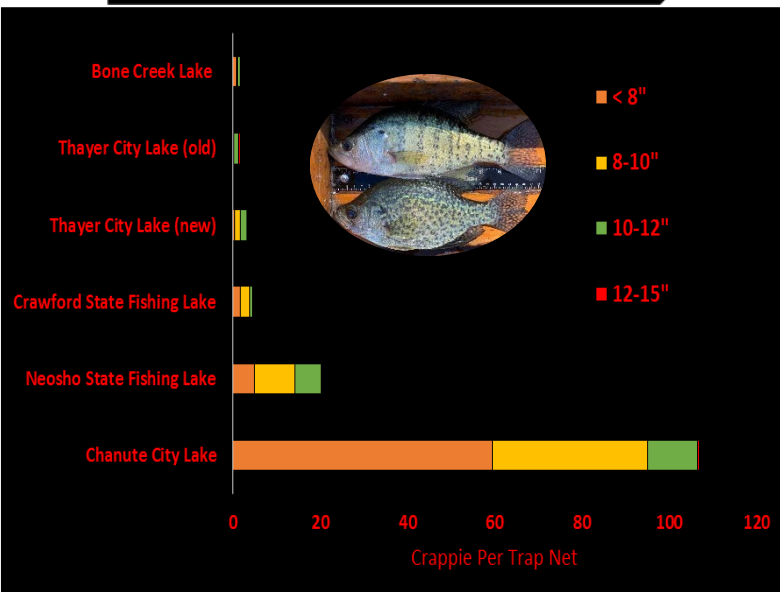
Redear Sunfish



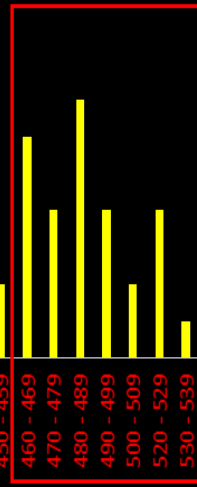
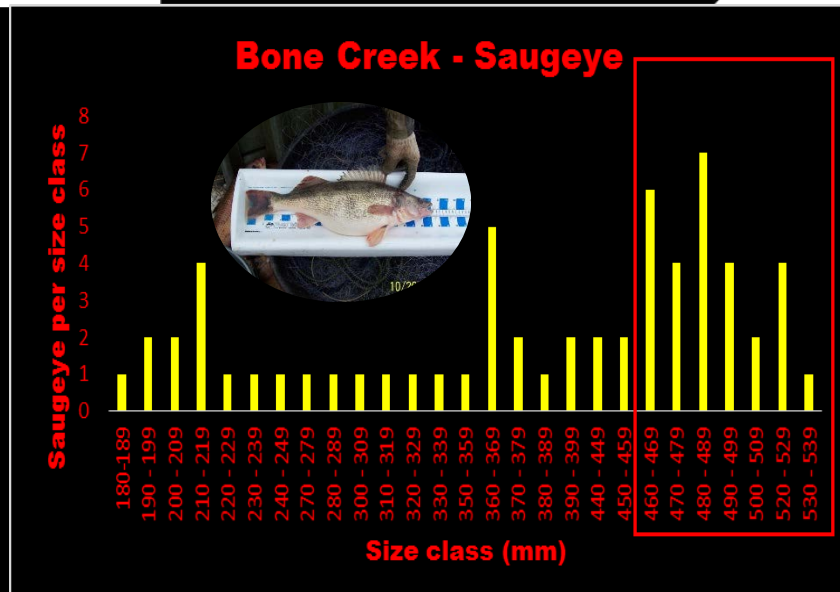
Quality bluegill fishing is how most of us got our start in fishing. The highest quality lakes in the Pittsburg district will be Bone Creek, Thayer City Lake (old), and Neosho State Fishing Lake. The highest densities will be found at Bone Creek, Thayer City Lake (new), and Thayer City Lake (old). Crawford State Fishing Lake remains at the bottom of the list. However, with recent habitat enhancement effort, it is of hope that the quality and quantity improve in the near future.

Redear sunfish are tenacious fighters when hooked on a fly rod, or bobber and worm. The highest quality lakes this year will be Neosho State Fishing Lake, Thayer City Lake (old), and Thayer City Lake (new). The highest densities will be at Bone Creek, Neosho State Fishing Lake, and Thayer City Lake (old). Crawford State Fishing Lake falls at the bottom, however 28,000 redear sunfish were stocked in April 2019 to bolster the current population.

Crappie



Saugeye



High water years usually bode well when it comes to crappie spawn and growth. Chanute City Lake flipped the script this year and tops the list for desirable lengths and numbers for 2020. Neosho State Fishing Lake and Crawford State Fishing Lake will be the next locations to try for 2020. Bone Creek doesn't lend itself well for sampling with trap nets, but quality crappie can be caught in 2020.

Saugeye are really improving in size and numbers in Bone Creek, which has produced a quality fishery for 2020. The box on the right side of the graph are saugeye over 18" that I sampled in nets last fall. There's a number over the minimum length limit of 18". Try drifting the flats on the east end of the lake, fish the creek channels with crankbaits, or the dam during the spring.

One More Cast!

What a year 2019 was. From the torrential downpours, flooding, and constant high water in many lakes in Kansas, 2020 should be a phenomenal year for total number of fish caught in Kansas.

I'm an avid public land bow-hunter and I was fortunate enough to harvest this whitetail last fall. I hope that you all enjoyed your time outdoors this fall and winter.

I know I'm ready to get out of the office and start fishing myself. See you out on the water! #KeepItReel



If you know of someone who would like to subscribe to the newsletter, they can do so [here](#). If you do not wish to receive the newsletter and unsubscribe, you can [CONTACT US](#) with "unsubscribe to Pittsburg District Newsletter" and we will get you taken off the list. If you would like to see anything different in upcoming editions of the newsletter or any questions, please don't hesitate to contact me.



Can you guess the name of this fish?

The species has a "long ear" past its gills.

It's a longear sunfish.

Connor Ossowski
District Fisheries Biologist
507 E. 560th Ave
Pittsburg, KS 66762
(620) 231-3173
connor.ossowski@ks.gov

Wildlife, Parks & Tourism
Kansas